



OUTCOME ATTAINMENT CALCULATION METHODOLOGY

**GOVERNMENT COLLEGE JAITHARI,
DISTRICT- ANUPPUR (M.P.) INDIA**

POLICY

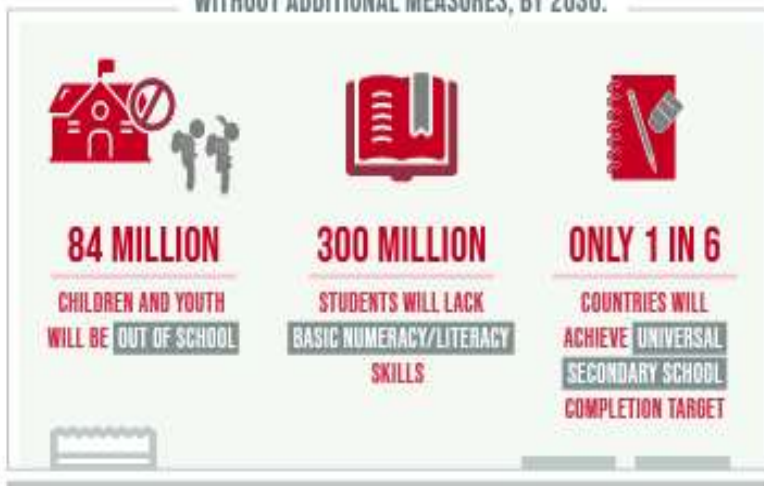


ENSURE INCLUSIVE AND EQUITABLE QUALITY EDUCATION AND PROMOTE LIFELONG LEARNING OPPORTUNITIES FOR ALL

DESPITE SLOW PROGRESS,

THE WORLD IS FALLING FAR BEHIND IN ACHIEVING QUALITY EDUCATION

WITHOUT ADDITIONAL MEASURES, BY 2030:



THE PANDEMIC

CAUSED LEARNING LOSSES IN **4 IN 5** OF 104 COUNTRIES STUDIED

PRIMARY AND SECONDARY SCHOOL COMPLETION RATES ARE **RIISING**, BUT THE PACE IS SLOW AND UNEVEN



LOW- AND LOWER-MIDDLE-INCOME COUNTRIES FACE A NEARLY

\$100 BILLION ANNUAL FINANCING GAP TO REACH THEIR EDUCATION TARGETS



Mr. Ashok Kumar Rathour

Adhyaksh

Janbhagidari Samiti Govt. College Jaithari, Anuppur (M.P.)

Forward



Dear Esteemed Members of Government College Jaithari,

As the Adhyaksh of the Janbhagidari Samiti of Government College Jaithari, District Anuppur, Madhya Pradesh, it gives me immense pleasure to present this foreword to our comprehensive College Policy. Since our institution's establishment in 2012, we have been on a journey of growth, learning, and community engagement. This policy document marks another significant milestone in our college's development.

The Janbhagidari Samiti, or Public Participation Committee, plays a crucial role in bridging the gap between the college and the community. Our committee's vision aligns perfectly with the college's mission to provide quality education while fostering a sense of social responsibility among our students.

This College Policy is a testament to our collective efforts to create an institution that not only excels in academics but also prepares students to be responsible citizens. It encompasses various aspects of college life, from academic standards to community outreach programs, reflecting our commitment to holistic education.

I urge all stakeholders - students, faculty, staff, and community members - to embrace this policy wholeheartedly. It is through your active participation and adherence to these guidelines that we can truly realize the potential of our institution.

As we move forward, let us remember that the strength of our college lies in the spirit of 'Janbhagidari' - public participation. This policy is not just a document, but a shared vision for our college's future. Together, we can build an educational institution that serves as a beacon of knowledge and social progress in our region.

I look forward to your continued support and cooperation in implementing this policy and in furthering the growth of Government College Jaithari.

Sincerely,

**Mr. Ashok Kumar Rathour
Adhyaksh- Janbhagidari Samiti
Govt. College Jaithari
District Anuppur, (M.P.)**



Dr. Ramesh Singh Wate

Principal

Govt. College Jaithari, Anuppur (M.P.)

Forward



Dear Students, Faculty, and Staff,

As the Principal of Government College Jaithari, District Anuppur, Madhya Pradesh, it is my privilege to present our comprehensive College Policy. This document serves as a cornerstone for our institution, outlining our vision, mission, and the guiding principles that shape our academic environment.

Our college policy is designed to foster an atmosphere of academic excellence, personal growth, and social responsibility. It reflects our commitment to providing quality education while nurturing the diverse talents of our students. The policy encompasses various aspects of college life, including academic standards, code of conduct, extracurricular activities, and community engagement.

I encourage all members of our college community to familiarize themselves with this policy. It is not merely a set of rules, but a roadmap for our collective success. By adhering to these guidelines, we create a harmonious and productive learning environment that benefits everyone.

As we move forward, let us embrace these policies with enthusiasm and dedication. Together, we can build a college that not only imparts knowledge but also shapes responsible citizens who will contribute positively to society.

I look forward to working with all of you in upholding the high standards set forth in this policy and in continually striving for excellence in all our endeavors.

Sincerely,

Dr. Ramesh Singh Wate
Principal
Govt. College Jaithari
District-Anuppur (M.P.)

Govt. College Jaithari, Anuppur M.P.

Department of Higher Education M.P.

Outcome Attainment Calculation Methodology Policy

Introduction:

Government College Jaithari aims to ensure transparency and accountability in assessing the outcomes of its educational programs. To achieve this, the college establishes a standardized Outcome Attainment Calculation Methodology (OACM) to measure the effectiveness of its educational endeavors.

Objective:

The primary objective of this policy is to define a systematic approach for calculating and evaluating the outcomes of educational programs offered by Government College Jaithari. This policy aims to provide a framework that ensures fairness, accuracy, and consistency in assessing the attainment of learning outcomes.

Scope:

This policy applies to all academic programs and courses offered by Government College Jaithari, including undergraduate and postgraduate programs.

Outcome Attainment Calculation Methodology:

a. Learning Outcomes Identification:

Before the commencement of each academic year, faculty members, in consultation with relevant stakeholders, shall identify clear and measurable learning outcomes for each program and course.

b. Assessment Tools Selection:

Faculty members shall select appropriate assessment tools, including examinations, assignments, projects, presentations, and any other relevant methods, to measure the attainment of learning outcomes.

c. Weightage Allocation:

Each assessment component shall be assigned a specific weightage based on its significance in evaluating the achievement of learning outcomes. Weightages shall be

determined by considering the complexity and importance of the assessed skills or knowledge.

d. Data Collection and Analysis:

Faculty members shall collect assessment data from various evaluation methods throughout the academic term.

The collected data shall be analyzed using statistical methods to determine the extent to which learning outcomes have been achieved.

e. Normalization and Standardization:

To ensure fairness and consistency, assessment scores may be normalized or standardized to account for variations in assessment difficulty or student performance across different courses or sections.

f. Outcome Attainment Calculation:

The attainment of learning outcomes shall be calculated based on the weighted average of assessment scores obtained by students in each course.

The calculated outcome attainment shall be expressed as a percentage or grade, indicating the level of achievement relative to the defined learning outcomes.

Reporting and Feedback:

a. Outcome Attainment Report:

At the end of each academic term, Government College Jaithari shall prepare an Outcome Attainment Report detailing the achievement of learning outcomes for each program and course.

The report shall include aggregated data on outcome attainment, highlighting areas of strength and areas needing improvement.

b. Feedback Mechanism:

Students and faculty members shall be provided with feedback on the outcome attainment results to facilitate continuous improvement.

Feedback mechanisms, such as surveys or focus group discussions, may be utilized to gather inputs for enhancing the effectiveness of educational programs.

Review and Revision:

This policy shall be subject to periodic review and revision to ensure its alignment with the evolving educational needs and standards.

Any proposed changes to the Outcome Attainment Calculation Methodology shall be discussed and approved by the relevant academic authorities before implementation.

Compliance and Enforcement:

All faculty members, staff, and students of Government College Jaithari are expected to adhere to the provisions outlined in this policy.

Non-compliance with this policy may result in disciplinary action as per the college's rules and regulations.

Implementation:

The implementation of this policy shall be overseen by the Academic Council and relevant administrative bodies of Government College Jaithari.

Adequate support and resources shall be allocated to facilitate the effective implementation of the Outcome Attainment Calculation Methodology.

Prepared By:- Mr. Gajendra Kumar Singh

Verified By:- Dr. Neeraj Jaiswal

**Coordinator IQAC
Govt. College Jaithari**

**Principal
Govt. College Jaithari
Anuppur (M.P.) 484330**